

And some of this will be very ugly.

Protestors from Morgan State University will decry the blatant racism evidenced in the Covenant that excludes blacks from the community.

But time will pass. And finally, after the ugly block-busting, and the fighting in the schools; after the angry lawsuits, the

demonstrations and the bitterness, Northwood will emerge—like a thousand other American neighborhoods which have made the same journey—with a sizable black population, and with a new sense of tolerance both for human beings of all kinds, and for those who decide that their front doors must be covered with orange

Govans

by Wesley Wilson

“Govans is a community of people—big, small, white and black—comfortable with themselves. They haven’t had to resort to the ridiculous habit of wearing funny costumes and staging stupefying festivals in order to differentiate themselves from everyone else.” That’s how one long-time resident affectionately describes his neighborhood. Govans is like that...quiet, industrious, steady, with a plan for its own development, and a stake in the rebirth of all of Baltimore. And Govans has always played a significant role in that revitalization, beginning ten years ago, when the neighborhood was the very first to agree to participate in the Baltimore City Fair.

The area was born when Frederick Calvert (the last Lord Baltimore) granted several hundred acres of land to a wealthy importer/shipowner, William Govane. Govane increased that grant by purchasing an adjoining area, known as “Friends of Discovery,” and in turn naming his estate “Drumcastle.” As the area was handed down through other Govane generations, a small stone cottage was constructed. That cottage, long since gone, was the first home in what was to become “Govans.” Until quite recently, a few direct descendents of Govane lived in the vicinity of that cottage.

paint.

By 1979, Northwood will find itself standing, uncertainly but hopefully, on the margin which divides past and future. An integrated community of about 45,000—the kind of place which takes great pride in its yearly Arts and Crafts Festival, in its neighborhood garden tours and in the energetic and creative ac-

Govans as a town grew in spurts, encouraged by the introduction of various forms of transportation over the years.



Grave of James Govane.
Photo courtesy of *The Sunpapers*

Other contributing factors were the springs of good water in the area, a grist mill that operated until 1880 along the Chinquapin Run, and the establishment of country inns and trading stores in the area that was to become the intersection of York Road and Woodbourne Avenue. Local industry played an important role in the growth of the area. One of the most profitable to Govans was the flower industry, both private and commercial. The first orchids to be grown in Baltimore were grown in Govans.

The single greatest influence was the construction of a turnpike that ran from Baltimore to Lancaster, Pennsylvania via York in 1786. Until 1840, the town grew slowly. But, with the arrival of the first omnibus in

activities of its busy community association.

Northwood. Having survived the tensions and uncertainties of an enormous, accelerating growth to become what it is today; Baltimore-suburb-turned-into-important-and-growing-city-neighborhood. It’s an American story. It’s an American place.

1844 (which would facilitate the luxury of twice daily mail delivery and pick-up in just ten years), Govans began a significant increase in population. Village centers and churches were founded.

The earliest congregation to establish itself in the area was the “Govans Presbyterian.” St. Mary’s also had its beginnings at this time, on the present site of the College of Notre Dame. (St. Mary’s remained there until the construction of a new building in 1942 on York Road and Markland Avenue.) The Govans Methodist Episcopal Church was the third to establish itself in the area, with its present building having its founding in 1850. Other churches located in the Govans area today are: the Gregory Memorial Baptist, Church of the Holy Nativity, Lutheran Church of the Holy Comforter, and the Swedenborgian Hillside Chapel.

The character of Govans changed again in 1863 with the introduction of the first railway from Baltimore City. In 1874, horse-drawn cars running on these rails brought former city dwellers who constructed permanent homes in what was soon to become a “suburban community.” The first wave of these new residents were wealthy merchants and industrialists, who built residential mansions and landscaped gardens. The influx of these residents, who became

known as "fancy farmers," lasted through the 1870's and led to the establishment of areas like Homeland, Cedarcroft and Dumbarton.

Woodbourne Avenue, in addition to its boarding houses and summer cottages, housed many well-known Baltimoreans. Estates along this corridor include W. Abell's "Woodbourne," William T. Walters' "St. Mary's," and Pratt's "Tivoli."

Tivoli, an Italianate stone building, presently serves as the

Woodbourne Center and the area that was once William T. Walters' St. Mary's is now the site of the Chinquapin Park Middle School. Many old farmhouses and estates have not fallen to the onrush of the 20th century urbanization and some still remain as private residences.

After World War I, Govans was annexed to Baltimore City. It grew rapidly until the housing market responded to the Crash of 1929. The late 30's and early 40's brought little residential

development to Govans. But post-World War II created a boom which led to a new wave of housing construction and an increased emphasis on consumer products. This, in turn, created a new set of business establishments. Even the neighborhood grocery store gave way to the idea of the modern supermarket. Of course, all of the commercial growth led to another significant increase in the population of Govans.

Today, unlike homogeneous

middle class suburbs, Govans is not exclusively "blue collar" or "white collar," "working class" or "professional." Many people of various backgrounds live in Govans and the community displays a surprisingly comprehensive, heterogeneous mix of people, families and occupations. And it has entered into another phase in its growth, as the York Road Planning Council melds private industry, government help and human needs into a comprehensive approach to tomorrow.

Mayfield

by Walter Alvey

The area bounded by Erdman Avenue on the south, Chesterfield Avenue on the north, Crossland Avenue on the east and Lake Montebello on the west, is known as Mayfield. Many attribute that name to the choice of one of the largest land-owners of the area, Judge John J. Dobler.

At the onset of this century, the main artery through Mayfield was really a dirt tract. In dry weather, the dust on Harford Road was six inches deep. Rain made it a mud trough. The road surface was rutted from the big wagons used to haul stones from the quarry at Hall's Spring. The west side sported streetcar tracks, while the east was lined with honey bean locust trees. The neighborhood was mostly farmland, except for Erdman Cemetery. And most of it was owned by Judge Dobler, Charles Knox and Theresa Skirven.

Improvements were slated for Harford Road—paving, regrading, and the running of ever-increasing numbers of electrical and telephone wires underground. The estates were

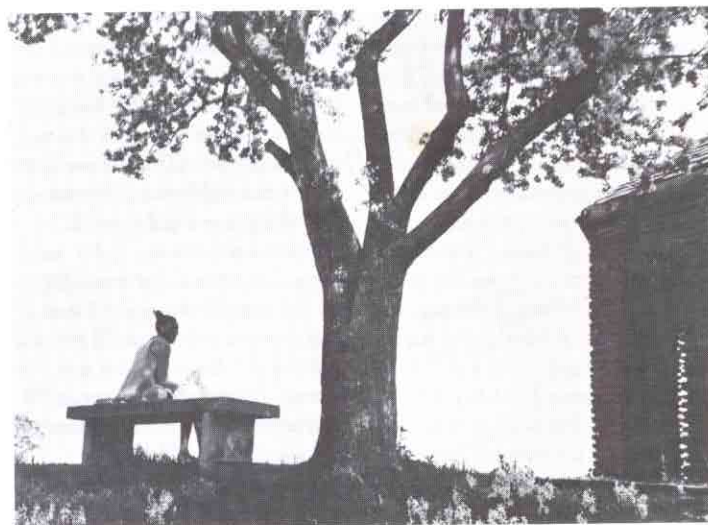


Photo by Gilbert Witten

surveyed and laid out into streets and lots, especially Dobler's larger acreage.

Development began in earnest. Lots were sold and houses built. Judge Dobler's home (now the Disney House) and the Eutaw Methodist Church were among the first to be built on Mayfield Avenue. 1909 marked the laying of the cornerstone for the church. The original Eutaw Church on the hill at Hall's Spring remains. It serves as a picnic area in Herring Run Park.

Numerous other churches were to follow; boulevards were constructed; gardens and parks were laid out. All provided a setting for the massive houses that were built of brick, stone or frame. Later, even the smaller semi-detached houses reflected this grand view of pleasant City living.

The growth of Mayfield was controlled and orderly. It became—and still is—a most pleasant neighborhood in which to live...surrounded today by the pastoral lands of Clifton Park, Herring Run and Lake Montebello.